



New Era® Performance Terry Full-Zip NEA530

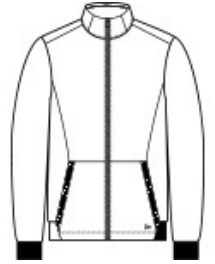


Perfect for year-round layering, this lightweight fleece style has a smooth face and soft terry backing for exceptional comfort.

- 6.5-ounce, 100% polyester French terry
- Heat transfer label for tag-free comfort
- Exposed Vislon® zipper
- Front seaming detail
- Front pouch pockets
- Embossed silicone New Era flag logo on left pocket
- 1x1 rib knit cuffs and hem

CARE INSTRUCTIONS

Machine wash cold with like colors. Only non-chlorine bleach if needed. Tumble dry low, cool iron if necessary.



front



back

HOW TO MEASURE



CHEST WIDTH

Measure under the arm and around the fullest part of the chest with arms down, keeping tape horizontal.

SIZE CHART

| | XS | S | M | L | XL | 2XL | 3XL | 4XL |
|-------|-------|-------|-------|-------|-------|-------|-------|-------|
| Chest | 32-34 | 35-37 | 38-40 | 41-43 | 44-47 | 48-51 | 52-56 | 57-61 |

COLOR INFORMATION

Please note: PMS code information is shown only when an exact match is available.



Black
PMS BLACK C



Graphite Heather



True Navy Heather
PMS 533C