

PORT AUTHORITY

# Port Authority® Women's Long Sleeve Ombre Plaid Shirt LW672



Casual and cool, this unique ombre plaid shirt has stretch and is perfect for a uniform look that is laid back, yet polished.

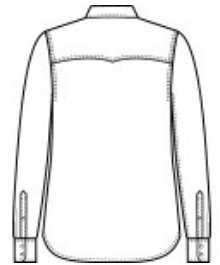
- 4.6-ounce, 59/39/2 cotton/polyester/spandex
- Lightly brushed twill plaid
- Easy Care
- Open collar
- Bias-cut back yoke
- Bust darts
- Double-chest pockets with bias-cut button flaps
- Pearlized buttons
- Double-button cuffs

### CARE INSTRUCTIONS

Machine Wash Cold With Like Colors. Only Non-Chlorine Bleach If Needed. Tumble Dry Low. Warm Iron If Needed.



front



back

### HOW TO MEASURE



### BUST

Measure under the arm and around the fullest part of the bust with arms down, keeping tape horizontal.

### SIZE CHART

	XS	S	M	L	XL	XXL	3XL	4XL
Size	2	4/6	8/10	12/14	16/18	20/22	24/26	28/30
Bust	32-34	35-36	37-38	39-41	42-44	45-47	48-51	52-55

### COLOR INFORMATION

Please note: PMS code information is shown only when an exact match is available.



Deep Black  
PMS BLACK C



Frost Grey



True Navy