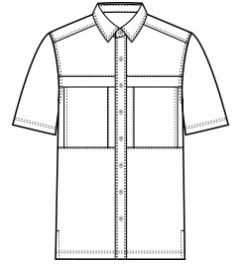


Port Authority® Short Sleeve UV Daybreak Shirt W961

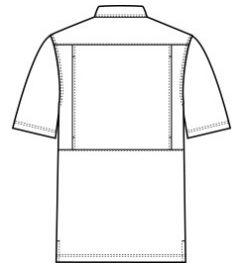


Sun and moisture are no problem for this versatile, lightweight, highly breathable shirt. Relaxed styling makes it perfect for outdoor or indoor wear.

- 2.2-ounce, 100% polyester poplin
- 2.5-ounce, 100% polyester poplin (White)
- 2.1-ounce, 100% polyester poplin (Plaids)
- Moisture-wicking
- UPF rating of 30
- Hidden button-down collar
- Dyed-to-match buttons
- Translucent buttons (Plaids)
- Two chest pockets with concealment flaps and hook and loop closures
- Vented back panel with mesh ventilation
- Straight hem with side vents



front

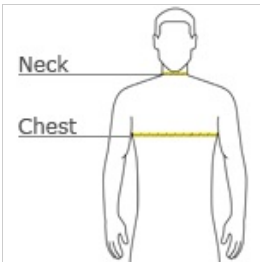


back

CARE INSTRUCTIONS

Fabric & Mesh Trim: 100% Polyester. Fasten Closures. Hook & Loop Before Washing. Do Not Wring. Machine Wash Cold Gentle Cycle With Like Colors. Only Non-Chlorine Bleach If Needed. Fabric Softener Not Recommended. Tumble Dry Low. Remove Promptly.

HOW TO MEASURE



CHEST WIDTH

Measure under the arm and around the fullest part of the chest with arms down, keeping tape horizontal.

NECK










Measure around the fullest part of the neck at the base.

SIZE CHART

	XS	S	M	L	XL	2XL	3XL	4XL
Chest	32-34	35-37	38-40	41-43	44-46	47-49	50-53	54-57
Neck	14 1/2-15	15-15 1/2	15 1/2-16	16-16 1/2	16 1/2-17	17-17 1/2	17 1/2-18	18-18 1/2

COLOR INFORMATION

Please note: PMS code information is shown only when an exact match is available.

										
Bright Seafoam PMS 564C	Deep Black PMS BLACK C	Gusty Grey PMS COOL GREY 8C	Light Blue PMS 644C	Oat	Rich Red PMS 207C	Silver/ Gusty Grey Crosshatch Plaid PMS COOL GRAY 8C	True Navy PMS 533C	True Royal PMS 7686C	True Royal/ White Mini Plaid PMS 7686C	White
										
Yellow PMS 600C										